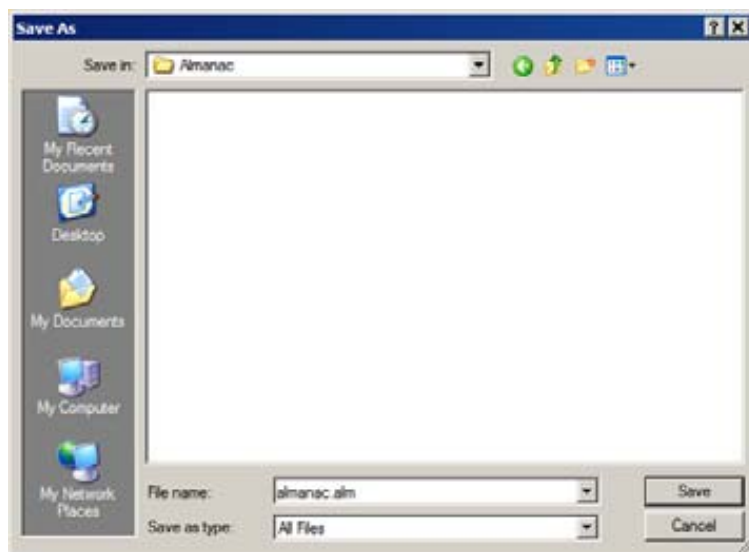


Trimble Planning Software: Setup and Configuration

The Trimble® GPS Pathfinder® Office software version 4 no longer contains the QuickPlan™ software. There is a form of planning available in the TerraSync™ software, for use in the field, but Trimble and Fairbanks International recognize the continued need for you to plot satellite availability and DOPs, and to key-in obstructions. This Support Note explains how to correctly configure Trimble Planning software for use with MGIS field computers.

1. Download the Planning software from <http://www.fairbanksintl.com/downloads/setup-planning.exe> and then install it on your office computer.
2. Download a current almanac:
 - a. Go to <http://www.trimble.com/gpsdataresources.shtml>.
 - b. Right-click *GPS/GLONASS almanac in Trimble Planning* file format and then select *Save Target As* to place the file on your office computer, for example, C:\Almanac:

To ensure that the file is saved as **almanac.alm**, not *almanac.alm.txt*, select *All files* in the *Save as type* field of the *Save as* dialog:



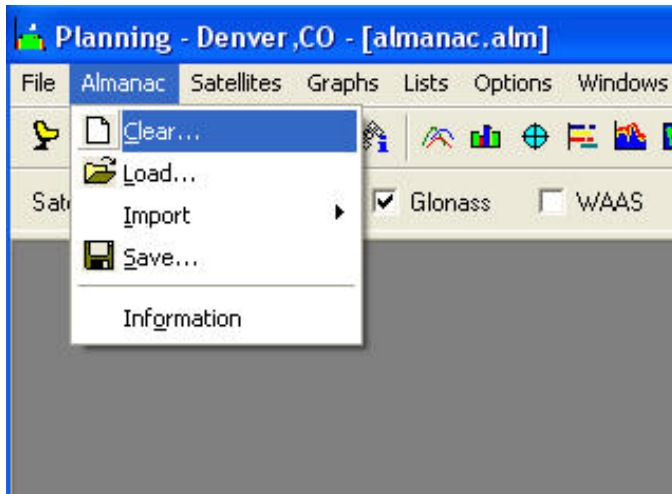
3. Set up a new planning session:
 - a. Start the Planning software.

FAIRBANKS INTERNATIONAL

P.O. Box 571 • 75481 Road 435 • Lexington, NE 68850 • 308-324-5553 • 800-248-5523
www.fairbanksintl.com

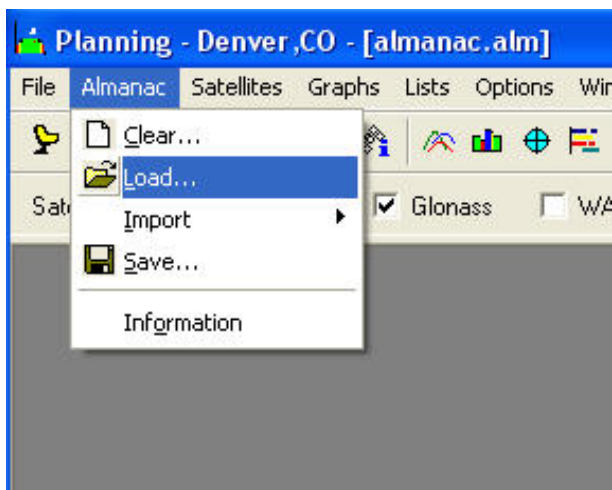
Service is the foundation of our business

b. From the *Almanac* menu, select *Clear*, to initiate a new planning session:

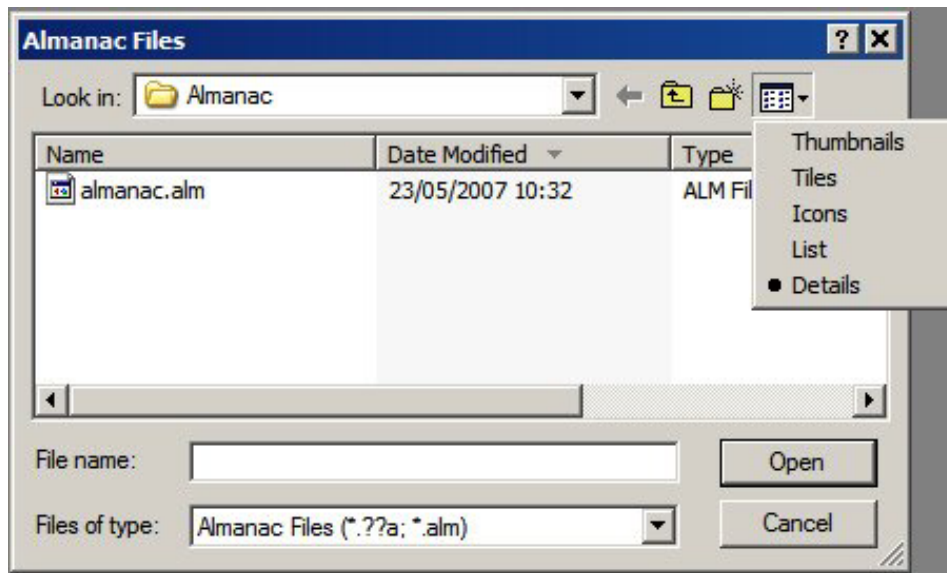


4. Load the new almanac:

a. From the *Almanac* menu, select *Load*:



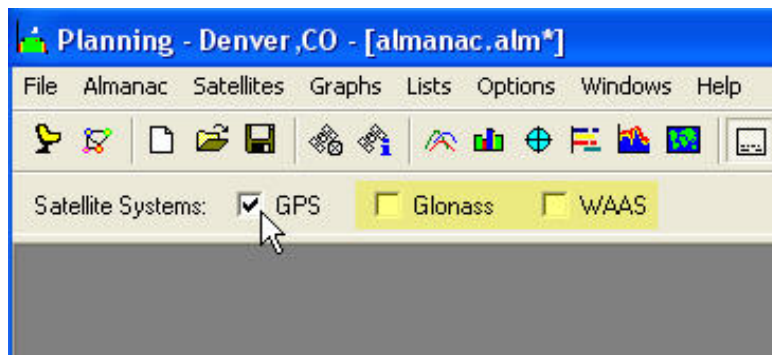
b. Navigate to the file that you just downloaded. In the *Almanac Files* dialog, select *Details* to view the file list. This way, you can be sure to select the latest file:



c. Select the almanac file that you just downloaded and then click **Open**.

d. When prompted, click **OK**.

e. In the *Planning* dialog, clear the check boxes for *Glonass* and *WAAS*; these are not required here.



5. Set the current location and time:

a. From the *File* menu, select *Station*. A dialog appears.

b. Set the *Station name* and any other details required.

c. In the *Time* group, enter the start date and time, the duration, and the interval for your planning session. To enter the current date in the *Start Date* field, click **Today**.

d. If there are obstacles or obstructions around, you must click **Obstacles** and then enter the details so that the Planning software can take them into account:

Station Editor

Station Name: Denver, CO

Position

Latitude: N 39 44

Longitude: W 104 59

Height: 0 [m]

Elevation Cutoff: 10

Time

Start Date: 5/21/2007

Start Time: 07:00

Duration: 4 [h]

Interval: 10 [min]

Time Zone: (GMT-07:00) Chihuahua, La Paz, Mazatlan - Old

DST Difference GMT: -6.0 [h]

Buttons: OK, Cancel, Apply, Delete, Obstacles..., Map..., City..., Today, Time Zone...

e. Click **Apply** and then click **OK**.

You can now view satellite availability, all DOPs, and the Sky Plot.

Tip: To place the DOPs and Visibility windows side by side for printing purposes, select *Windows / Tile Vertically*.

Note: If you have your own reference station that produces a *current.ssf* file, you can still use it with the Planning software. From the *Almanac* menu, select *Import / SSF*.